

## Features

- 5 Bedroom
- Bathroom
- Ensuite
- Walk-in Robes
- Laundry

### Window Schedule

1 x 0606 OX	Obscure window
1 x 0609 OX	Obscure window
1 x 1018 OX	Window
6 x 1218 OX	Windows
3 x 2118 OX	Sliding Glass Doors
1 x External Duracoat 1/3 Glass door	

**Span** 9000 mm  
**Length** 18000 mm

**Floor Area** 162 sqm

### July 2011 Special \$ 34990

Lockup Kit suitable for concrete slab

N3 wind rated

2400mm ceiling height

Zinc Trimclad Roof, Colour Trim

Colour Horizontal Custom Orb Wall Cladding

1 x 2500 x 18000 Skillion Awning

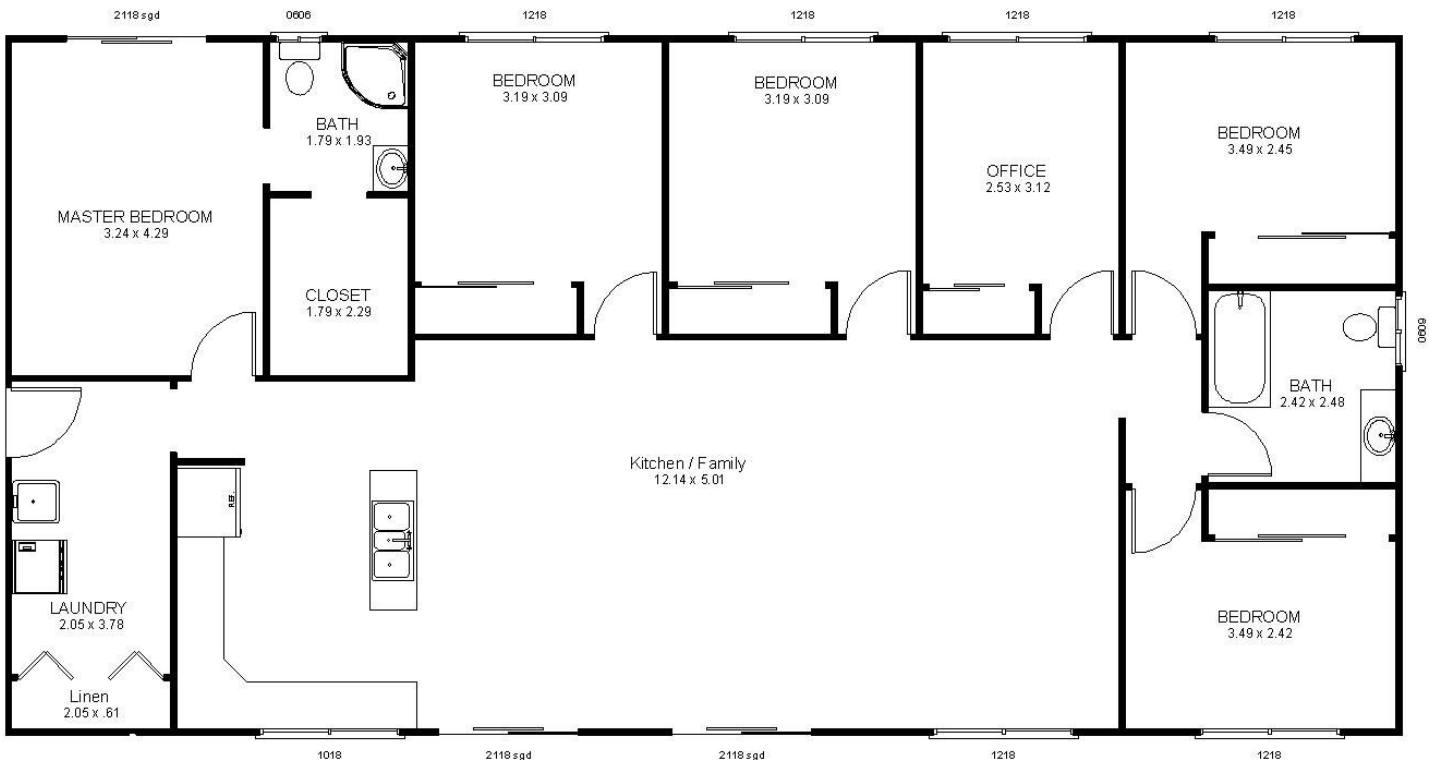
Includes Internal steel walls and ceiling battens

Ex-Factory Gympie

Optional Steel Floor System from \$ 18200

Optional Awnings and Gable Extensions POA

Balustrades and stairs not included.



Mecano Sheds Pty Ltd

ABN 66 060 490 851

Dennis Little Drive,

Gympie Industrial Estate, Gympie, Qld. 4570.

Phone: (07) 5482 5614

Fax: (07) 5482 4527

Email: [sales@mecano.com.au](mailto:sales@mecano.com.au)

Web: [www.mecano.com.au](http://www.mecano.com.au)